

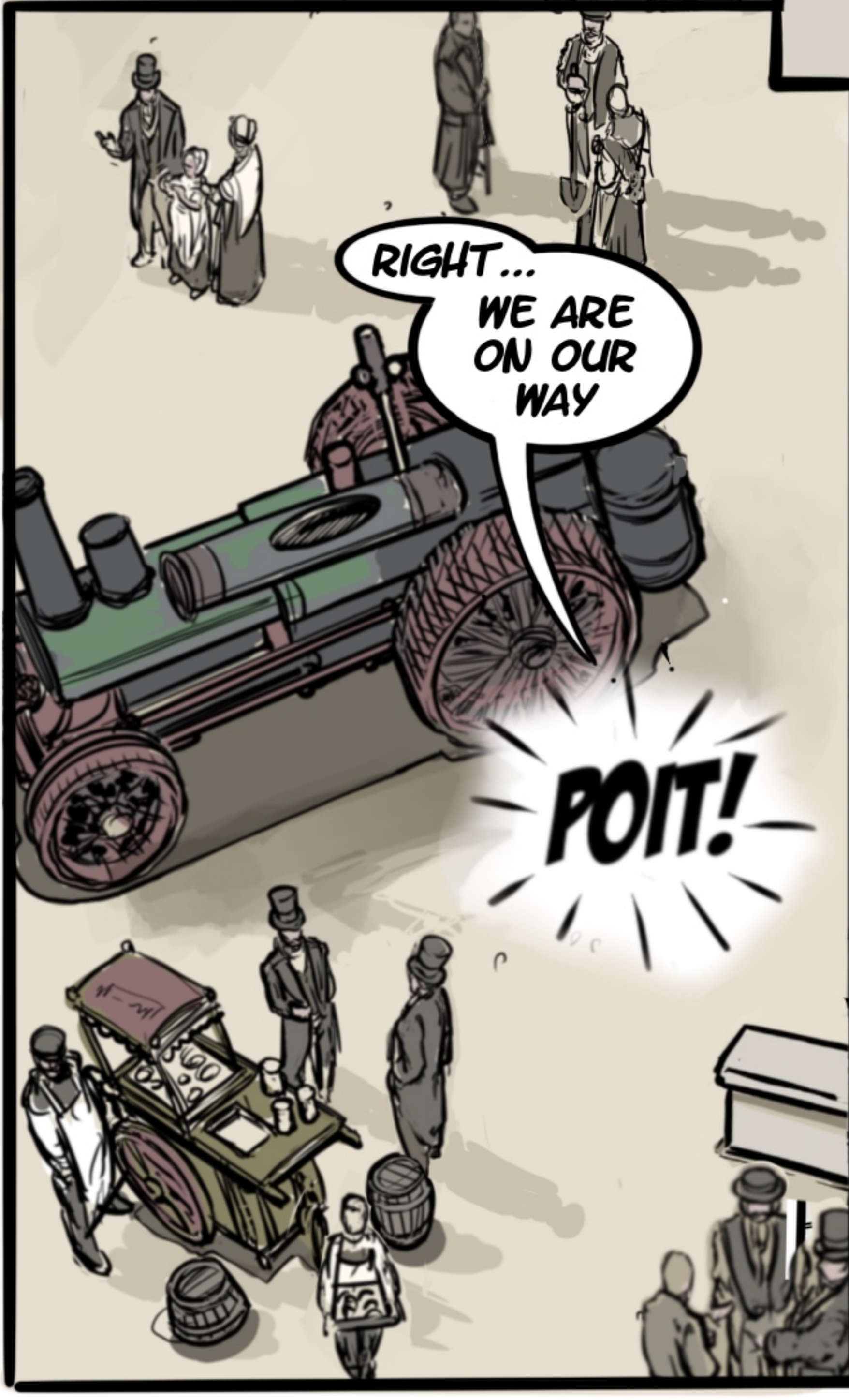
SOMETIME LATER...

HEY GUYS, ANY CHANCE YOU COULD HEAD BACK, I THINK IT'S TIME TO COMPARE NOTES AGAIN.

SURE, THINGS ARE BEGINNING TO WIND DOWN ANYWAY.

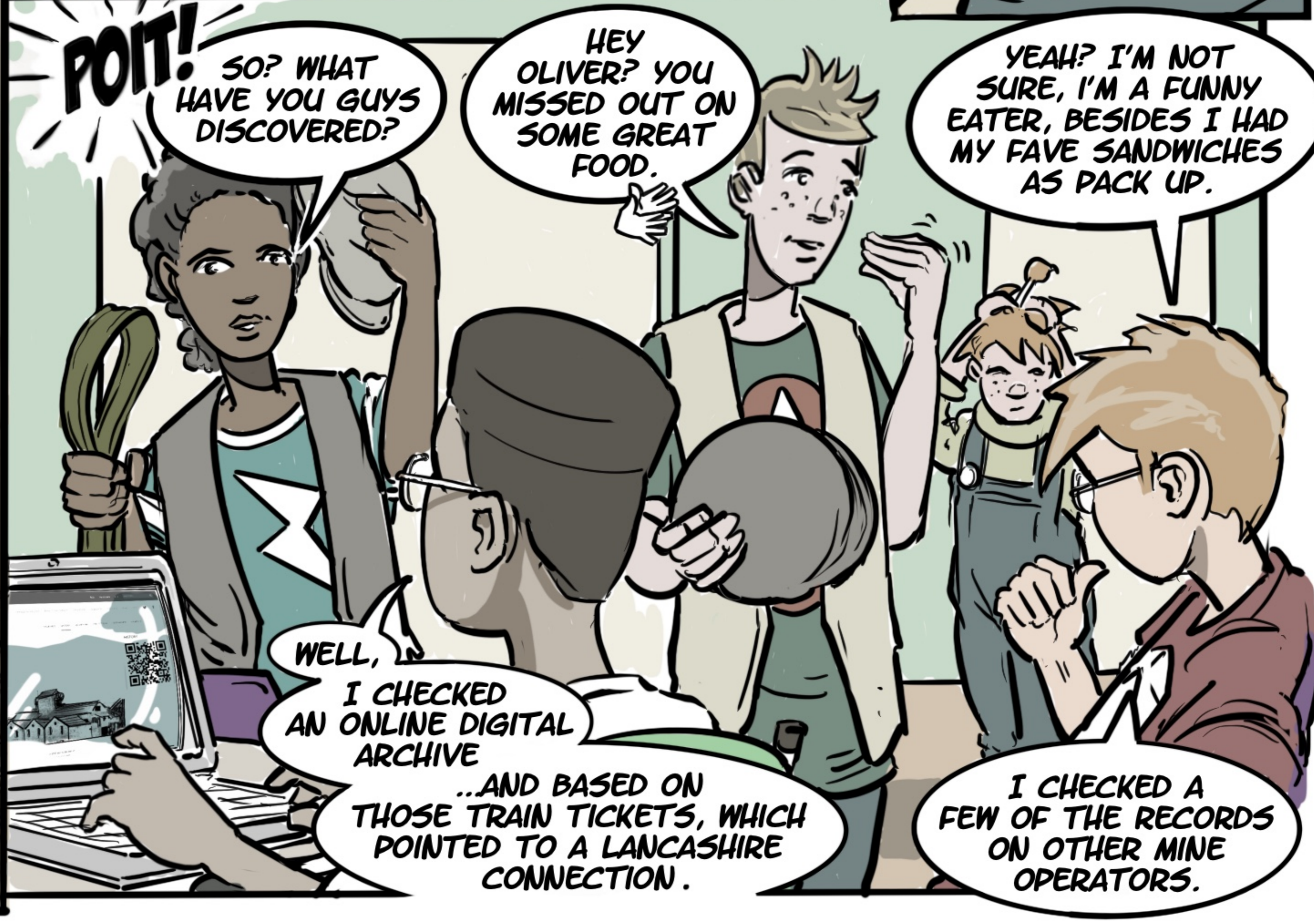
ASK IF THEY WANT ANY HOT EELS OR PEAS-SOUP BRINGING BACK?

GREAT, OLIVER AND I THINK WE MIGHT HAVE FOUND SOMETHING.



RIGHT... WE ARE ON OUR WAY

POIT!



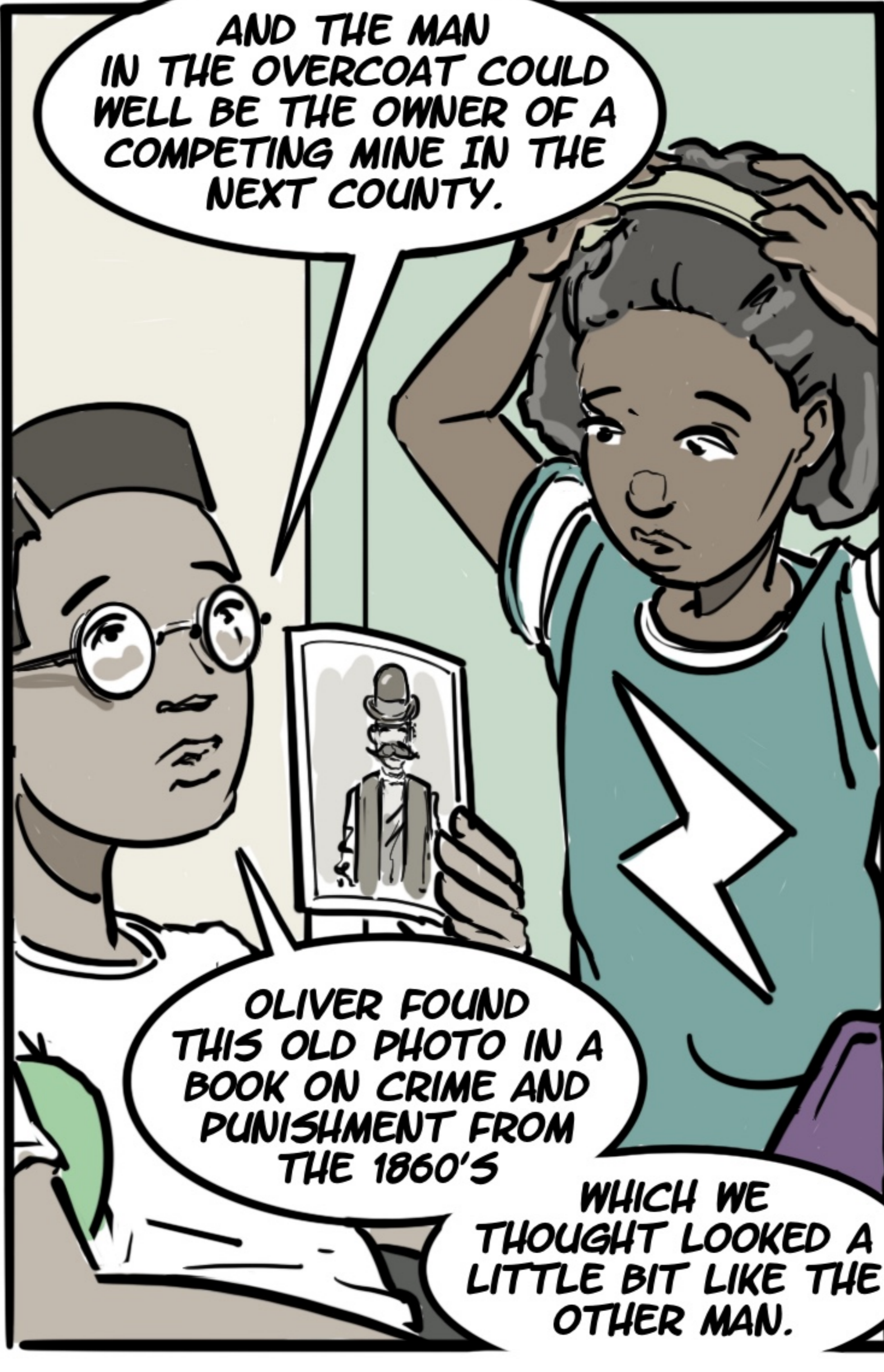
POIT! SO? WHAT HAVE YOU GUYS DISCOVERED?

HEY OLIVER? YOU MISSED OUT ON SOME GREAT FOOD.

YEAH? I'M NOT SURE, I'M A FUNNY EATER, BESIDES I HAD MY FAVE SANDWICHES AS PACK UP.

WELL, I CHECKED AN ONLINE DIGITAL ARCHIVE ...AND BASED ON THOSE TRAIN TICKETS, WHICH POINTED TO A LANCASHIRE CONNECTION.

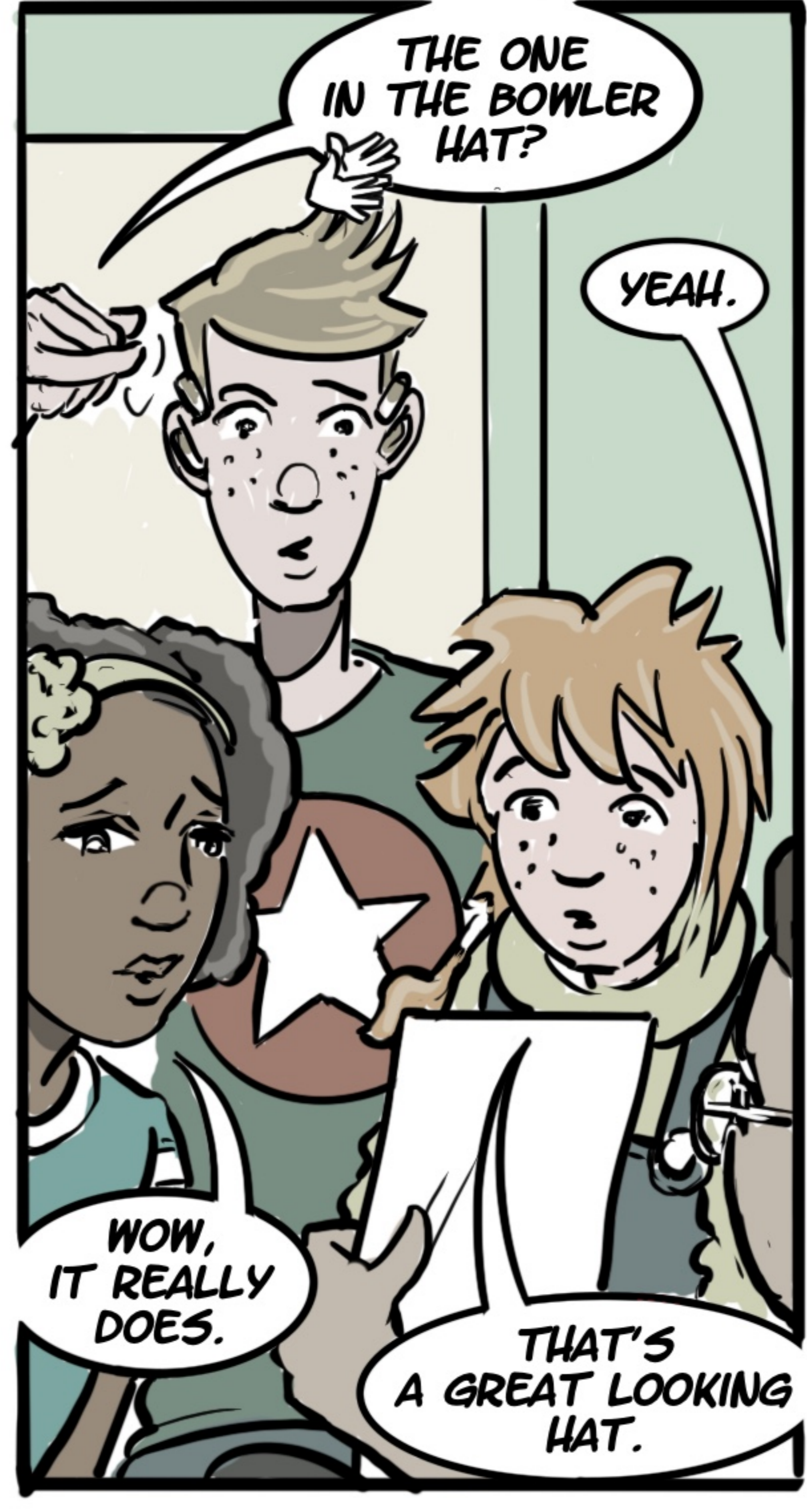
I CHECKED A FEW OF THE RECORDS ON OTHER MINE OPERATORS.



AND THE MAN IN THE OVERCOAT COULD WELL BE THE OWNER OF A COMPETING MINE IN THE NEXT COUNTY.

OLIVER FOUND THIS OLD PHOTO IN A BOOK ON CRIME AND PUNISHMENT FROM THE 1860'S

WHICH WE THOUGHT LOOKED A LITTLE BIT LIKE THE OTHER MAN.



THE ONE IN THE BOWLER HAT?

YEAH.

WOW, IT REALLY DOES.

THAT'S A GREAT LOOKING HAT.



HE FITS THE DESCRIPTION OF A MAN CAUGHT BREAKING INTO A WORKSHOP IN 1863,

LOOKING FOR PATENTED DESIGNS FOR A LARGER STEEL FURNACE.



SO WE'VE GOT A DEVICE DESIGNED TO HELP MAKE THESE MINES SAFER...

A POSSIBLE RIVAL MINE OWNER WHO'S PASSING MAPS OF STORAGE ROOMS TO A MAN FROM OUT OF TOWN.

NOT JUST A MAN FROM OUT OF TOWN...

POSSIBLY A CRIMINAL OF SOME SORT.

ONE WHO HAS TRAVELLED FROM THE NEXT COUNTY OVER.

WELL, IT LOOKS LIKE THIS IS A CLEAR CASE OF...

...OF WHAT? IT LOOKS LIKE WE HAVE A COUPLE MORE CLUES AS TO WHAT IS GOING ON. DO YOU KNOW WHY THE WHIRLY-GIG WAS TAKEN? WHAT DO YOU THINK THE GANG CAN DO NOW? LET US KNOW... TELL US AT learning@barnsley.gov.uk