

THE HISTORY KIDS in

THE MYSTERY OF THE WHIRLY GIG

PUBLIC MEETING & SHOWCASE

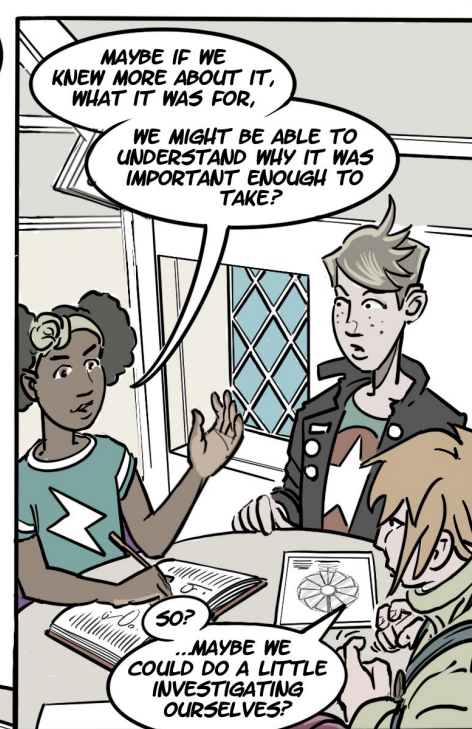
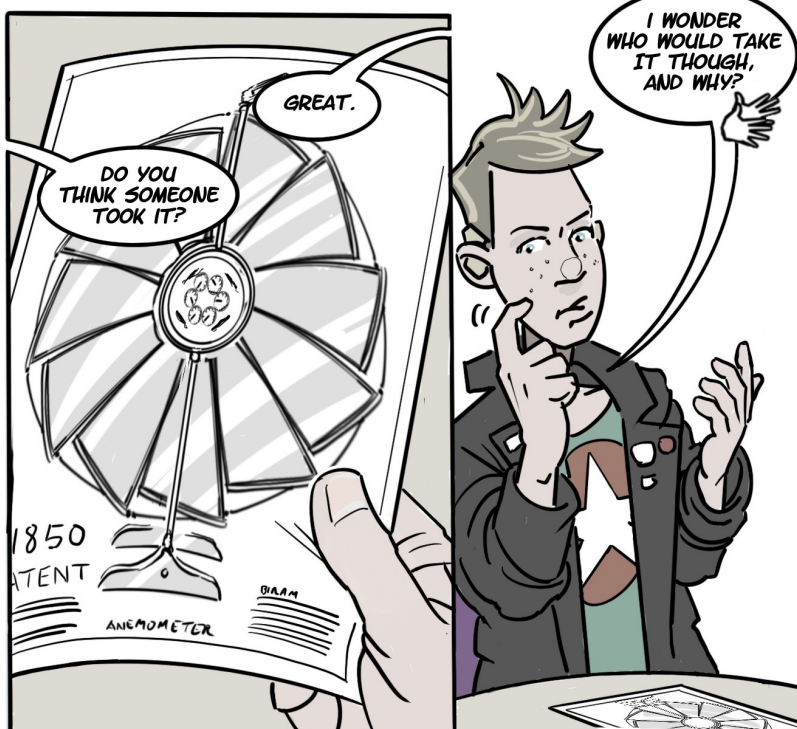
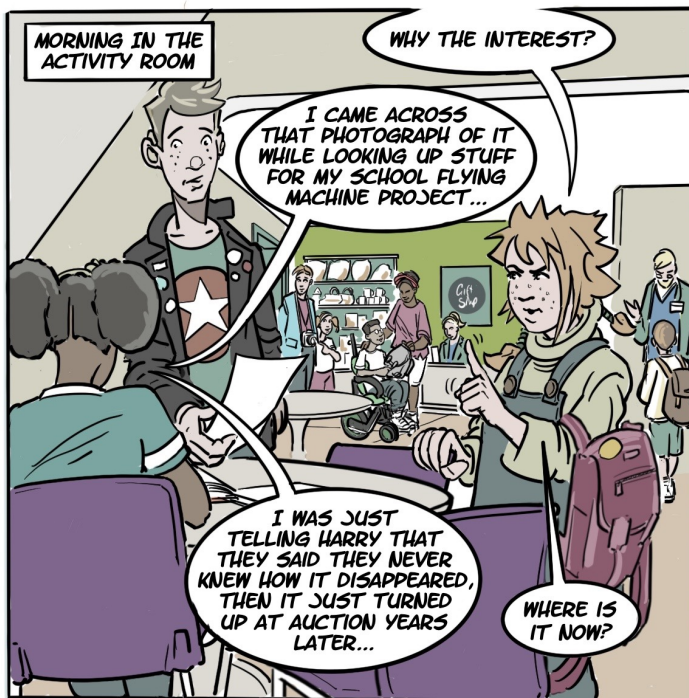
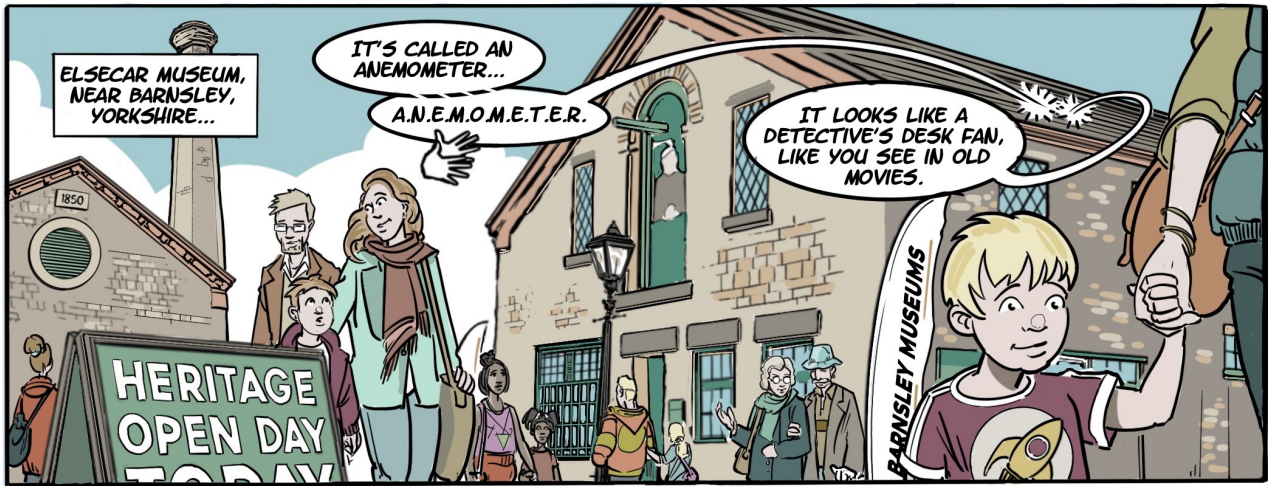
MR. BIRAM'S MARVELOUS MINING INVENTION

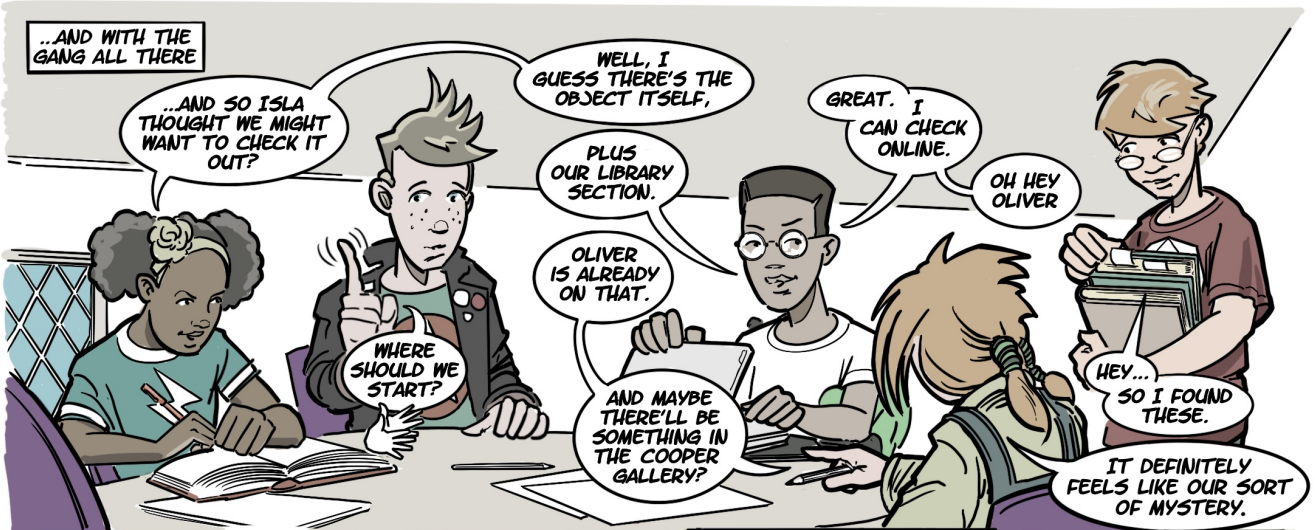
Includes:
DEMONSTRATIONS
and formal
presentations of the
device
to the people so
inclined.

THOS. W. COOPER,
ESTATE CLERK



New for Summer
2020
ELSECAR HERITAGE CENTRE
SUMMER STAYCATION CLUB





*YOU CAN ASK SARAH TAYLOR TOO, EMAIL [LEARNING@BARNSLEY.GOV.UK](mailto:learning@barnsley.gov.uk)



WELL, WE KNOW IT WAS ALSO CALLED "BIRAM'S WHIRLYGIG!"

MATERIALS:
CLOTH, ALUMINUM
COPPER, GLASS,
METAL,
LEATHER

A CONCISE HISTORY
OF THE
WORLD

THE HISTORY
OF MINING

SAFETY LAMP

ANEMO METER

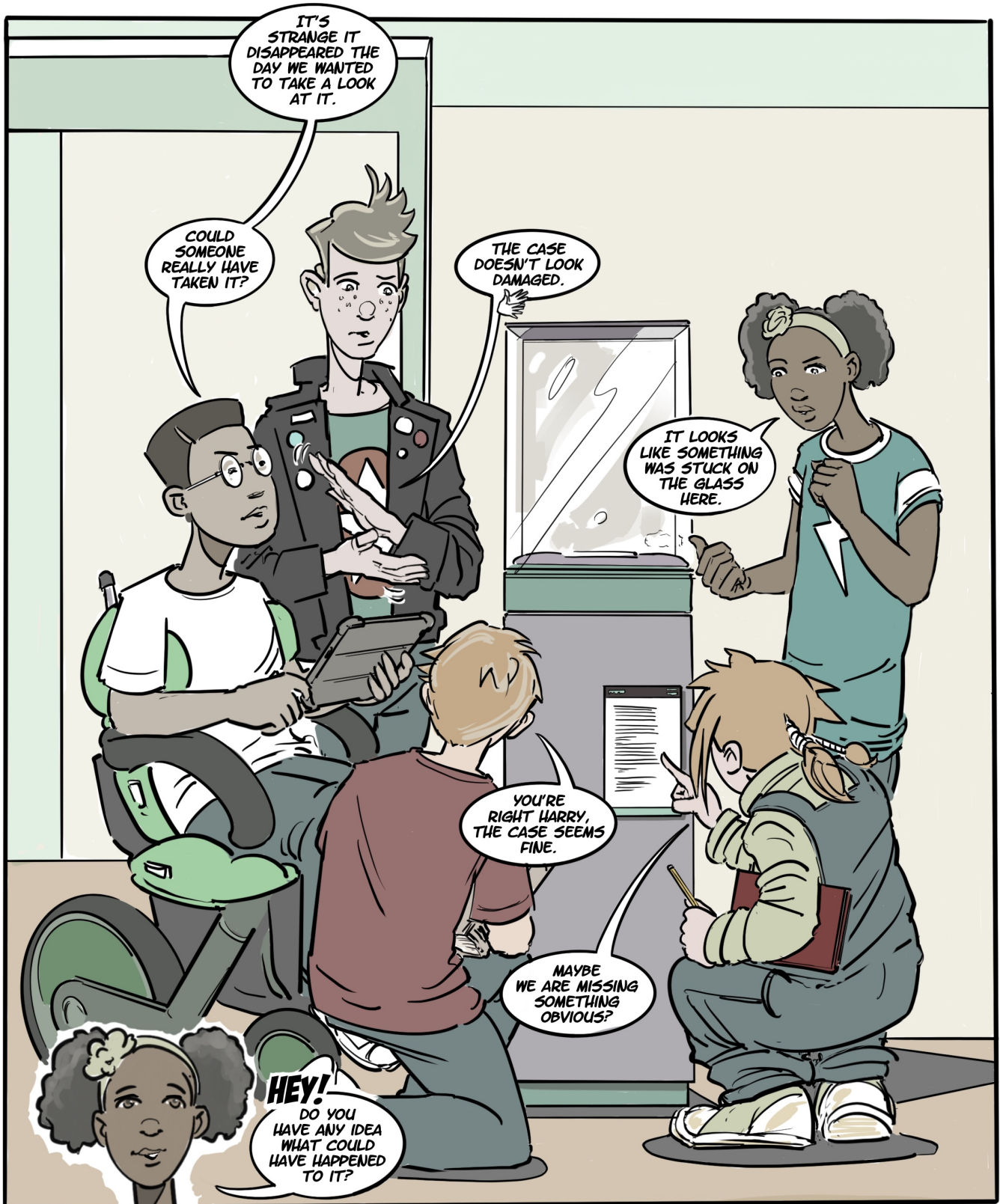
1844
PATENT

FITZ WILLIAM

WELL, THAT, AND IT'S NO LONGER IN ITS CASE HERE AT THE MUSEUM.

SO, WHAT DO WE KNOW?
ARE YOU ABLE TO USE ANY OF THE TECHNIQUES WE DISCUSSED TO FIND OUT ANYTHING ELSE ABOUT THE OBJECT?
WHAT QUESTIONS WOULD YOU ASK AND WHERE WOULD YOU LOOK FOR ANSWERS?

SEND YOUR DRAWINGS, MODELS & QUESTIONS TO US LEARNING@BARNSLEY.GOV.UK



DO YOU HAVE ANY IDEA WHERE THE WHIRLY-GIG HAS GONE?
IF YOU THINK YOU KNOW WHAT MIGHT HAVE HAPPENED TO IT, OR YOU HAVE ANY THOUGHTS ON WHERE IT MIGHT BE, LET US KNOW.
**LEARNING@BARNSELEY.GOV.UK,
#HISTORYKIDSELSECAR**



ELSECAR
HERITAGE CENTRE

SUMMER STAYCATION CLUB!

PRESENTS:

SOLVE IT YOURSELF - THE MYSTERY OF THE WHIRLY GIG

FEATURING:



#HISTORYKIDSELSECAR

THE HISTORY KIDS

JOIN THE GANG AS THEY UNCOVER A FIENDISH PLOT OF INDUSTRIAL ESPIONAGE FROM THE PAST. CALLING ALL YOUNG DETECTIVES! CAN YOU HELP UNRAVEL ALL THE CLUES AND SAVE THE DAY. JUMP INTO THE PAST WITH BARNSELY MUSEUMS FOR A REALLY WILD ADVENTURE!

BARNSELY MUSEUMS

Barnsley Museums are owned and operated by Barnsley Metropolitan Borough Council. The museums are Cannon Hall, Worsbrough Mill, Cooper Gallery, Elsecar Heritage Centre and Experience Barnsley.



CANNON HALL
MUSEUM PARK & GARDENS



COOPER
GALLERY



ELSECAR
HERITAGE CENTRE



EXPERIENCE BARNSELY
MUSEUM & DISCOVERY CENTRE



WORSBROUGH MILL
WORKING MILL & COUNTRY PARK