

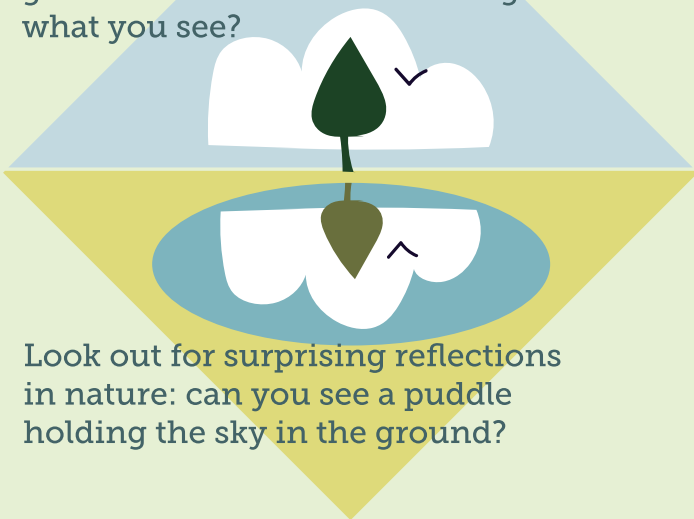


Capture and share your own unique view of the world at Wentworth Castle Gardens. Bring your curiosity and a camera to explore nature and history in a whole new way.

To inspire your journey, here are a few tips to discover a new way of looking.

REFLECTIONS

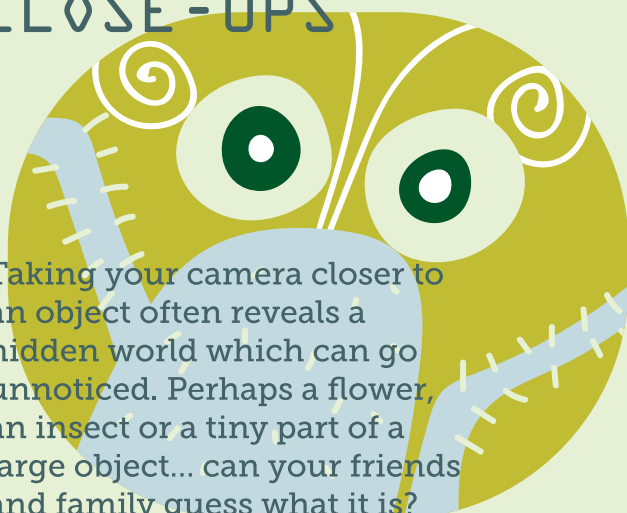
Reflections are everywhere, including water, shiny metal and glass. Does the reflection change what you see?



Look out for surprising reflections in nature: can you see a puddle holding the sky in the ground?

CLOSE-UPS

Taking your camera closer to an object often reveals a hidden world which can go unnoticed. Perhaps a flower, an insect or a tiny part of a large object... can your friends and family guess what it is?



SHADOWS

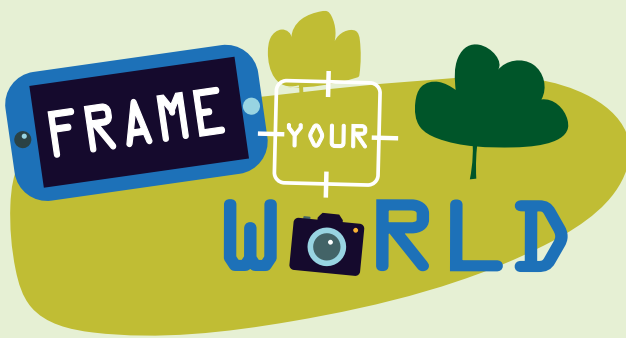
Shadows created by the sun or a torch are great to play with - try creating your own fantastical shadow creatures. Remember, a simple background makes the shadows easy to see.



TEXTURES

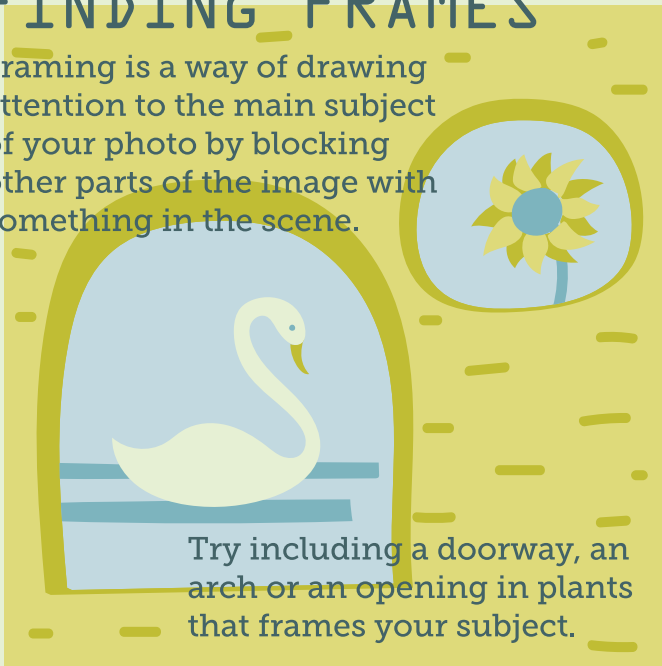
Look for different kinds of surfaces and patterns, perhaps in nature or a wall. Usually, when light comes in from an angle, the texture is more visible. Try black and white photos: by removing the colour, the textures and shapes are easier to see.





FINDING FRAMES

Framing is a way of drawing attention to the main subject of your photo by blocking other parts of the image with something in the scene.



Try including a doorway, an arch or an opening in plants that frames your subject.

SELFIES

Can you find new ways to take your selfie? Perhaps a wobbly reflection in a puddle or on a curved shiny surface. Try creating a selfie shadow or show just a part of your face peeking through leaves.

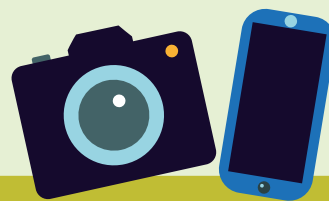


Do your family and friends recognise you?

Remember, sharing photos is a lovely way to gain inspiration, build confidence and learn new skills.

Share your photos at:

@ntwentworthcastlegardens
@barnsleymuseums



Turn your search for images into a scavenger hunt and complete 50 Things to Do Before You're 11³/₄, Activity No. 30. What will you capture with your camera?

To explore more activities, visit:

www.nationaltrust.org.uk/wentworth-castle-gardens
www.nationaltrust.org.uk/50-things-to-do



BARNSELY MUSEUMS



Working together to create a place for everyone.