



BARNSELEY MUSEUMS

Learn with Barnsley Museums: 2024-25



Barnsley Museums provides innovative ways to explore our sites through engaging learning programmes which challenge and delight pupils of all ages. Be inspired by our unique buildings, landscapes and objects, and discover how arts and culture can support you to teach a Creative Curriculum.

We can welcome you to our unique venues, deliver engaging outreach workshops at your school, live stream sessions virtually into your classroom, and provide individually-created loan boxes linked to your topic.

learning@barnsley.gov.uk

www.barnsley-museums.com/schools

TRIPS, OUTREACH AND VIRTUAL SESSIONS

Local History

Trips:

World War Two: Sent to the Country – KS1/KS2 – Cannon Hall Museum, Park and Gardens – Full day workshop - £280 per class

Pupils meet the Cook and Housekeeper at Cannon Hall and become evacuees for the day in this immersive workshop. They will take part in traditional wartime activities, view real and replica objects and discover how to make tasty treats, even during rationing!

- Pupils will learn about significant people, places and events in their locality after 1066
- Pupils will make a local history study



“ We thoroughly enjoyed our WW2 workshop - very many thanks for an excellent, well organised and immersive experience. We look forward to coming again! ”

Victorian Kitchen – KS1/KS2 - Cannon Hall Museum, Park and Gardens – Full day workshop - £280 per class

Your pupils will transform into Victorian servants for the day as they become immersed in history to help our Cook and Housekeeper prepare for the Master’s party. They will cook a meal on our Victorian range, take part in traditional activities, and take an historical tour of Cannon Hall.

- Pupils will learn about significant people, places and events in their locality after 1066
- Pupils will make a local history study



“ The staff were very knowledgeable and great with the children. The visit gave the children chance to try a variety of experiences which they were fully immersed in. ”

Deep Down Underground – KS2 - Experience Barnsley Museum – Full or half day workshop - £280/£160 per class

Pupils will explore coal mining in Barnsley using objects and maps from our inspiring archive and museum collections. They will handle mining objects, explore the Experience Barnsley exhibition, understand map progression over time and take part in hands-on activities relating to coal mining.

- Pupils will make a local history study



Trips:



Stone Age to Iron Age – Lower KS2 – Experience Barnsley Museum – Full or half day workshop - £280/£160 per class

Bring prehistory to life as your class discovers how to be archaeologists for the day. Pupils will understand chronology, discover the differences between the Stone Age, Bronze Age and Iron Age, examine replica objects, and take part in traditional prehistoric activities such as creating cave art and food ‘foraging’. Pupils will explore the Experience Barnsley exhibition.

- Pupils will learn about changes in Britain from the Stone Age to the Iron Age

“ *The children loved looking around the museum. They were keen to show off their knowledge in the intro and when talking about the artefacts. Everyone got stuck in and staff were accommodating, friendly and knew their stuff!* ”

The Mill Mouse – EYFS/KS1 – Worsbrough Mill and Country Park – Half day workshop - £160 per class

Using our bespoke story, ‘The Mill Mouse’, explore the Mill and follow the journey of wheat to flour. Discover how the Mill works, learn which foods are made from flour, and have a go at hands-on activities to support learning.

- Pupils will explore and use mechanisms, for example levers, sliders, wheels and axles
- Pupils will understand where food comes from
- Pupils will study a site dating from a period beyond 1066 which is significant in the locality



“ *Lots of links with science, maths, food tech, English. Hands on and practical. Excellent venue, range of activities, approachable leaders.* ”

Trips:



Field to flour – KS2 – Worsbrough Mill and Country Park – Half day workshop - £160 per class

Explore the journey of wheat from field to flour in this hands-on workshop. Pupils will visit the Mill and discover how it works, find out all about the different foods that can be made from flour, and have a go at grinding their own flour from wheat.

- Pupils will understand seasonality and know where and how a variety of ingredients are grown, reared, caught and processed
- Pupils will explore the requirements of plants for life and growth
- Pupils will make a local history study
- Pupils will recognise that some mechanisms, including levers, pulleys and gears, allow a smaller force to have a greater effect.

“ We loved the knowledge of adults, interactivity of exhibits, child friendly staff, variety of activities, and links to national curriculum. ”

Outreach:

Deep Down Underground - KS2 - Full or half day session - £280/£160 per class

Explore Barnsley's coal mining community in your classroom by getting hands on with objects and archive materials. Your pupils will examine maps and census documents to discover more about mining life in the Borough.

- Pupils will make a local history study



Stone Age to Iron Age - Lower KS2- Full or half day session - £280/£160 per class

Bring prehistory to life in your classroom as your pupils become archaeologists for the day. They will understand the chronology of the prehistoric period, discover the differences between Stone Age, Bronze Age and Iron Age, categorise replica objects, and take part in traditional prehistoric activities such as making an arrowhead and food 'foraging'.

- Pupils will learn about changes in Britain from the Stone Age to the Iron Age





Online workshops:

Virtual Victorians – KS1/KS2 - £70 per class

Bring your Victorians topic to life in the classroom with our live 45 minute online workshop! Meet the Cook or Housekeeper from Cannon Hall and ask them questions about their job. Watch our video tour of the Hall and take a sneak peak behind the scenes in the Servants' quarters. Then help us get ready for the Master's party that evening.

Workshop fee includes access to all films, follow-up activity worksheets and additional information about the Hall, a pre-session conversation with the facilitator and the workshop itself.

Why not book it alongside one of our loan boxes for a truly immersive Victorian experience?

- Pupils will make a local history study

“ *The children loved their experience and were really inspired by it.* ”

“ *The session supported the children in their understanding of the objects and therefore their ability to add the information into their role play. It enabled a rich vocabulary to be added to their narratives and we saw the level of understanding that the children had achieved from the session through their play* ”



World War Two: Evacuees Online – KS1/KS2 - £70 per class

Bring your WW2 topic to life in the classroom with this live 45 minute zoom session! Meet a member of the Women's Voluntary Service and find out all about their daily life at Cannon Hall during WW2. Then have a go at some WW2 activities to see what life would have been like for an evacuee in the war.

Workshop fee includes access to all films, follow-up activity worksheets and resources, a pre-session conversation with the facilitator and the workshop itself.

Why not book it alongside one of our loan boxes for a truly immersive WW2 experience?



ENGLISH:

Trips:

Creative nature writers – Upper KS2 - Wentworth Castle Gardens – Half day workshop - £160 per class

This outdoor creative writing workshop is perfect for recapping English composition techniques with your class. Pupils will be inspired by the beautiful landscapes and natural spaces of the gardens to develop initial ideas for poems to be built on back in the classroom.



- Pupils will create settings, characters and plot
- Pupils will note and develop initial ideas, drawing on reading and research where necessary

“

I liked to walk around and enjoy the fresh air. Today has been brilliant – I liked writing poems and getting ideas from the flowers

”





SCIENCE:

Trips:

**Earl Fitzwilliam: Raising water by fire - KS2 -
Elsecar Heritage Centre - Half day workshop -
£160 per class**

Explore Elsecar, learn about the Earl Fitzwilliam, and find out how the Newcomen Beam Engine works in this 2-hour STEM and Local History workshop. Pupils will investigate the Earl Fitzwilliam's purchase of the Newcomen Engine, handle real objects, and take a tour of the site to find out more about coal mining in the area.

“ We liked the different activities and using both indoors and outdoors. Thank you! Great, informative session. ”

- Pupils will describe in simple terms how fossils are formed
- Pupils will observe that some materials change state when they are heated or cooled
- Pupils will make a local history study
- Pupils will study a site dating from a period beyond 1066 which is significant in the locality

ART AND DESIGN:

Trips:

Portraits and self-identity – KS1/KS2 – The Cooper Gallery or Cannon Hall Museum, Park and Gardens – Half day workshop – £160 per class

Pupils will become immersed in original works from the Cooper Gallery collection, or the De Morgan collection at Cannon Hall, learning new ways of looking at and interpreting art. Focussing on portraits by local artists, they will learn the basic principles of portraiture while developing their sketching skills.



- Pupils learn to use drawing, painting and sculpture to develop and share their ideas, experience and imagination.
- Pupils learn to improve their mastery of art and design techniques, including drawing, painting and sculpture with a range of materials; for example pencil, charcoal, paint and clay.

Look, Make, Print – KS1/KS2 – The Cooper Gallery – Full or half day workshop – £280/160 per class

Pupils will explore artwork from The Cooper Gallery collection, focussing on colour, line and shape before relocating to Experience Barnsley Museum to develop techniques to create their own linocut prints to take home.



- Pupils learn to improve their mastery of art and design techniques, including drawing, painting and sculpture with a range of materials

Outreach:

Portraits and self-identity – KS1/KS2 - Half day session – £160 per class

Your pupils will become artists for this two-hour session where they will learn the basics of portraiture including proportion and detailed drawing of facial features. They will develop and improve a range of drawing techniques whilst being inspired by works of art from the Cooper Gallery collection or the De Morgan collection at Cannon Hall.



- Pupils learn and improve their mastery of a range of art and design techniques
- Pupils will learn about the work of a range of artists, craft makers and designers

SELF-LED RESOURCES

Barnsley Museums offers self-led visits to all of our sites free of charge. We ask all visiting groups, including self-led, to book with us in advance either via our website or by email. We offer lunch spaces for self-led groups at Worsbrough Mill, Elsecar Heritage Centre and Experience Barnsley at a cost of £35. We have a variety of trails and resources which can be used to support your visit. These resources can also be used in addition to a half day workshop at one of our sites.

Local History:

Miners' Strike trail – KS2 – Experience Barnsley – Free, please book in advance.

Learn about the Miners' strike and Women Against Pit Closures movements in Barnsley and beyond with our trail and handling box, using real objects and archive materials. Have a go at creating your own political campaign.

Object trails – KS1/KS2 – Experience Barnsley – Free, please book in advance.

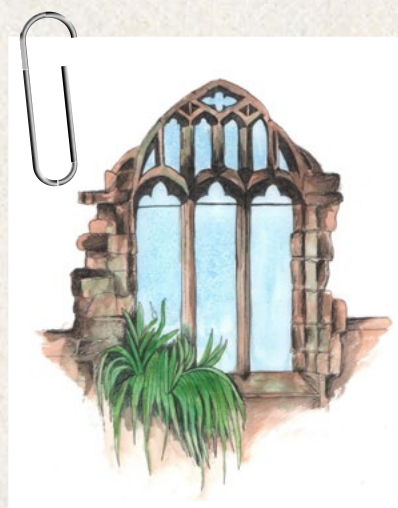
Use our spotters guides and activity sheets to get to know the objects in Experience Barnsley better and discover more about local history.



English:

Storytelling trails – KS1/KS2 – Worsbrough Mill and Country Park, Cannon Hall Museum, Park and Gardens or Elsecar Heritage Centre – Free, please book in advance.

Let your imagination run wild with our spoken storytelling trails at Worsbrough Mill, Cannon Hall and Elsecar Heritage Centre. Using our mystery character and object bags, as well as the inspirational outdoor settings of these magical sites, see what stories your pupils can come up with to develop back at school.



Science:

Nature spotting trail – KS1/KS2 – Worsbrough Mill and Country Park – Free, please book in advance

Explore Worsbrough Country Park with our self-led nature trail – how many animals can you spot around the reservoir? Record your findings in a tally chart to inspire maths lessons back at school.



Art:

Art Sparks trail – KS1/KS2 – Cannon Hall Museum, Park and Gardens – Free, please book in advance.

Explore Cannon Hall Country Park with our Art Sparks pack and let your pupils' creative juices flow. Link art and nature with wellbeing and getting outdoors. All materials for activities must be provided by the school.

LOAN BOXES

Local History

KS1/KS2 - £60 per half term

• Pupils will make a local history study

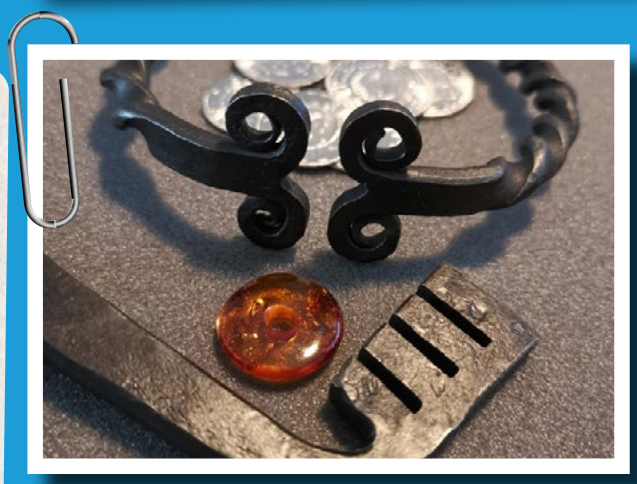
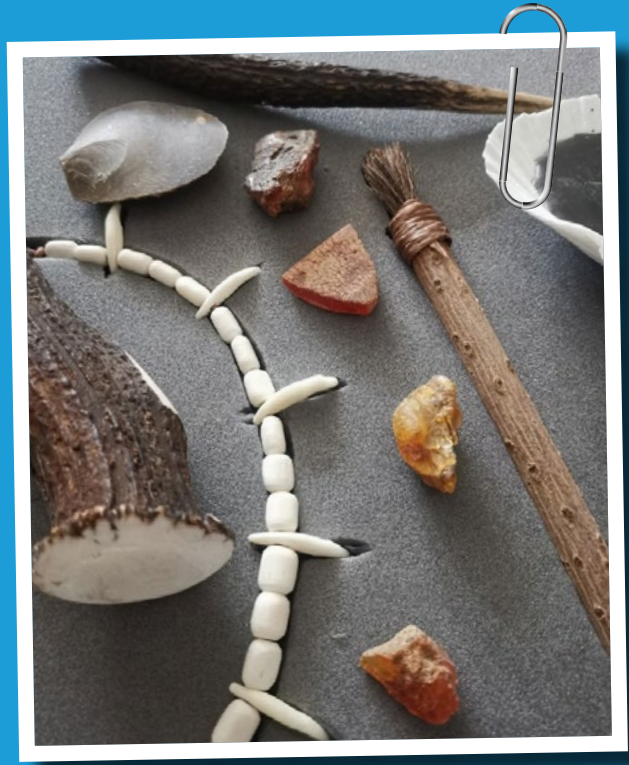
Explore a range of topics with our lovingly made handling boxes full of real and replica objects from the past. Each box comes with a teacher pack giving more information about the objects and their stories.

Topics available:

- Coal mining
- Victorians
- WW2
- Toys
- Stone Age
- Anglo-Saxons
- Vikings
- Romans
- Medicine through time
- Industrial Barnsley (coal, glass and textiles)

“ It’s a great resource and something really different. It gives you lots of background information and explains the different vocabulary really well. We are currently learning about the history of our local area and resources are often hard to find. This is great!

”



LOCAL HISTORY SENSORY LOANS BOX

Explore local history with our sensory loans box, specially designed for pupils with Special Educational Needs and Disabilities. Featuring smells, sounds, costume and objects from Barnsley's past.

Accessibility

Our workshops can be adapted to support any specific educational needs your group may have. Please let us know on booking if you would like to discuss any of these.

Arts Award

Barnsley Museums supports Arts Award delivery and offers two Discover in a Day workshops – ‘Look, Make, Print’ at the Cooper Gallery and ‘Portraits and self-identity’ at the Cooper Gallery/ Cannon Hall Museum, or as an outreach session. Your pupils will receive a bespoke Barnsley Museums logbook and we will process the administration and moderation of the award. Please contact us to discuss prices and availability for these sessions. If you are delivering Arts Award in school, our other workshops can help fulfil certain elements. Please contact us to discuss details of your Award.



Terms and Conditions

We can take a maximum of 36 children per class, per workshop which must include appropriate adult to child ratios. All adults are free of charge.

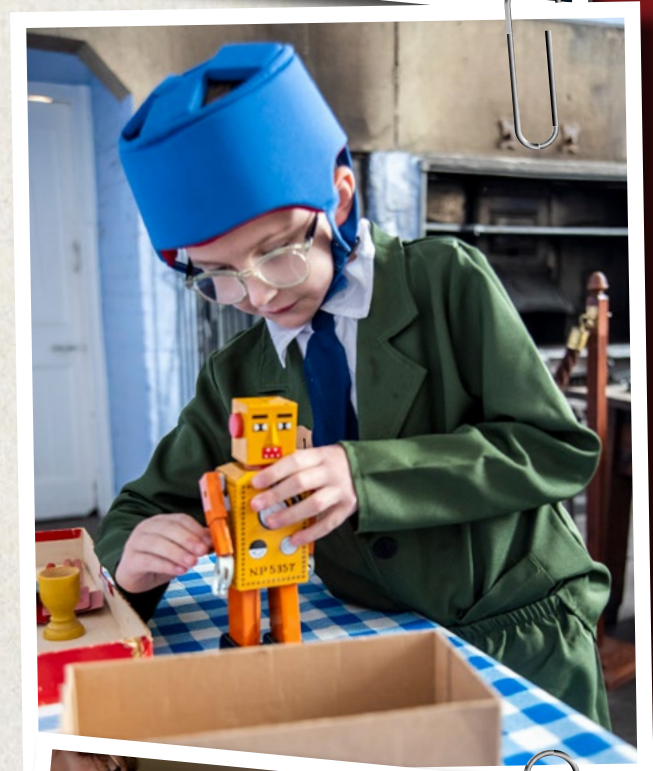
Please note that once you have filled in and returned your booking form, your booking is finalised. In the event that you wish to cancel a workshop after returning your form, the following cancellation fees will be charged:

If the trip is cancelled a month before the booking, no cancellation fee will be charged. If the trip is cancelled between one month and one week in advance of the booking, we will in the first instance look to rearrange the visit. If this is not possible, 50% of the workshop fee will be charged.

If the trip is cancelled within one week of the booking, we will in the first instance look to rearrange the visit. If this is not possible, the full workshop fee will be charged.

Discounted rates for groups of fewer than 20 pupils are available.

Please contact us to discuss these.





All trips and outreach sessions are led by a member of our highly experienced Learning team. Each activity or resource comes with a full Risk Assessment, and is tailored to the National Curriculum.

Visit: www.barnsley-museums.com/schools

or email: learning@barnsley.gov.uk

for more information or to make a booking.

All enquiries must be made at least 4 weeks in advance of the required date.



Supported using public funding by
**ARTS COUNCIL
ENGLAND**

BARNSELY MUSEUMS



BARNSELY
Metropolitan Borough Council